



Riffles

The Monthly Newsletter of the
East Jersey Chapter of Trout Unlimited



Volume 41

April 2011

Number 4

A Dangerous Alien

We have a sinister alien from Asia that is believed to have arrived on our shores in the wood packing material that is used in shipments from China. It is the Asian Longhorned Beetle, a large, destructive insect that can kill mature trees.

The damage is caused by beetle larvae which burrow deep within a tree to feed on its food and water conducting vessels. Continued feeding causes structural defects and eventually kills the life-sustaining cambial layer by girdling. Mature beetles then burrow out of the tree leaving holes the diameter of ball-point pens. Heavy Asian Longhorned Beetle infestations can kill otherwise healthy adult trees.

The beetles favor maple trees but infestations have also been discovered in hardwood trees such as horsechestnuts, poplars, willows, elms, mulberries and black locusts. Currently, there is no known chemical or biological defense against them and, in North America, they have few natural predators. In all cases of infestation, the affected trees are cut down and the wood chipped and burned.



Local infestations have been discovered in Brooklyn and Amityville, New York, and in Chicago, Illinois but, according to the University of Vermont, the beetles have also been found in New Jersey and Toronto and have been intercepted in warehouses or at ports all over North America. Recently, they were found near the Ver-

(Continued on page 2)

When: April 13 at 7:30 PM

Where: American Legion Hall
33 West Passaic Street
Rochelle Park, NJ

April Speaker John Punola Shad Fishing

Mention shad and people think of John Punola. That's perfectly normal because for thirty years John has been catching shad, explaining shad to crowds at fishing and outdoors shows and writing magazine articles about shad fishing.

John is the author of seven books about fishing in New Jersey, Pennsylvania and New York waters and also guides for shad and smallmouth bass. But, besides writing and teaching about fishing, he also has time to practice what he preaches; proof of this is the 26 1/2 inch American Shad that he caught while fishing the Delaware from the shore at Worthington State Forrest.

If you plan on joining us on EJTU's May 14 trip to the Delaware, or if you intend to fish the Delaware some other time, you should be at the April 13 meeting to get some advice from John Punola.

There's no taking trout with dry breeches.

~Miguel de Cervantes

EJTU Calendar

Advise Rich Malizia (973-304-0789 or remgcp@optonline.net) of changes to calendar events; let Ed Higgins (easyedh@gmail.com) know if you are interested in fishing trips well in advance because openings are limited and reservations must be made in advance. Get your money in as soon as possible or someone else will take your place.

Please consult EJTU's web site's "Upcoming Events" for the most up-to-date and details.

Apr 2/3 - Pequest
Open House

Apr 9 - Opening Day
Trout fishing

Apr 13, - Members Mtng, John Punola Shad Fishing Outlook

Apr 14/May 26 - Trout stocking
Thursdays

Apr 29 - May 1 - Frost Valley Trip

Apr. 30 - Hooked on the Hudson
May 11 - Members Mtng, George Douglas Steelhead fishing

May 14 - Fishing Trip - Shad Fishing on the Delaware

May 27/29 - Housatonic Trip

May 28 - Mahwah Fishing Derby
Jun 3, 5, 6, - Picnic/Fishing Trip

Catskill Fly Fishing Museum
Jun 11, - Ramapo River Day

Aug/Sept. - Date TBA - Planting along Cresskill Brook

Aug/Sept - Date TBA - Rebuilding weir on the Ramapo

Sep/Nov - Paramus Fly Tying Classes



Spring!

**East Jersey Chapter
Trout Unlimited
Board of Directors**

President/ Conservation Chair
Ray Cappock

1st Vice President/Webmaster
Bill Borowski

2nd Vice President/Treasurer
Bruce Seiden

Recording Secretary
Dino Eftychiou

Membership Secretary
Ken Barile

Education
Doug Penna

Speakers
Ed Higgins

Merchandise
Basil Santamaria

Trout in the Classroom
George Petersen

Points
Paul Reithmeier

Publicity Chair
John Grisoni

At Large
Elio Chiavola

Founding President
Don Ecker

Monthly General Member Meeting: The East Jersey Chapter of Trout Unlimited meets on the second Wednesday of each month at 7:30PM.

Location: The American Legion Hall,
33 West Passaic St, Rochelle Park, NJ. 07662.

Monthly Board Meeting: Board Members of East Jersey Trout Unlimited meet on the last Thursday of each month at 7:30PM.

How to contact us: Website <http://www.eastjerseytu.org> Mailing Address: East Jersey Chapter, Trout Unlimited Box 366 HoHoKus, NJ 07423-0366
For Membership Information call Ken Barile at 201-391-9214 or email to: kenbrile@optonline.net.
For Information on trips and other Chapter Activities go to www.eastjerseytu.org
For East Jersey and National Trout Unlimited information, visit our website at <http://www.tu.org>. Go to chapter number 091 and you will get the latest information about our chapter.
Riffles is your publication so we invite and encourage every member to contribute articles, tips, and stories. The articles may relate to trout, trout fishing, fishing in general or conservation but all articles are published at the discretion of the editors and should meet EJTU standards regarding protecting our environment and the merits of 'catch and release' techniques. Pseudonyms may be used but the editors must be informed of the name of the member who writes the article. Email to raycapp@optonline.net

(Continued from page 1)

mont border in Worcester, Massachusetts

The mature beetles are very large, shiny and black with white spots; their bodies are 1 to 1½ inches long with black and white striped antennae as long as four inches long. They have wings and can fly but only for short distances.



Mature beetles emerge from trees in late May through

October. Tree infestations can be detected by looking for exit holes 3/8 to 3/4 inches in diameter often in the larger branches of the of infested trees. Sometimes sap can be seen oozing from the exit holes with coarse sawdust or 'frass' in evidence on the ground or lower branches.

If you suspect an Asian Longhorned Beetle infestation, please collect an adult beetle in a jar, place the jar in a freezer and immediately notify: 1-866-233-8531 (Automated Hotline), 609-292-5440 (NJ Department of Agriculture) and 201-533-9610 (ALB Project Office)

Unfortunately, the only way currently known to combat the Asian Longhorned Beetle is to destroy the infested trees. But, while cutting down mature trees is a tragedy, it is preferable to permitting this new menace to spread

For photos, schedules, streamflow data, links to fishing and equipment sites and other up-to-the-minute information.....

Visit the East Jersey TU Web site

www.eastjerseytu.org

**Welcome to February 2011's
New Members**

Kenneth Colombo	Bogota
Todd Dubivsky	Bayonne
Terry Graber	Hillsborough
Robert Krawiec	Ramsey
Seth Phillips	Jersey City
Thomas Powell	Cedar Grove
Joseph Simone	Ridgewood

**Early Start at the
May 11 Meeting**

Usually everyone stands around chatting from the time they arrive at the American Legion Hall until we begin our formal meeting with the Pledge of Allegiance at around 7:30 PM. On May 11, however, we will start with a helpful pre-meeting presentation by Doug Penna.

Doug has found instructions for making a Dubbing Brush Twister and he feels that EJTU's members, particularly the fly tiers, would be interested in seeing the process.

So, come to the May 11 meeting a little earlier than usual and watch Doug's presentation.

By 7:30 PM Doug will have completed his talk and the meeting will take place as usual with George Douglas, our speaker, telling us about steelhead fishing.

Trout Stocking

Once again, as water conditions permit, we will float and bucket stock the Ramapo River during the April and May State, Thursday stockings.

The dates are:

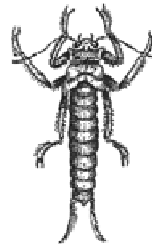
**April 14, 21, 28 and
May 5, 12, 19 1nd 26**

We will meet at 9:30 AM at the Glen Gray Bridge for coffee while we wait for the truck to arrive.

Glen Gray Road is the border between Mahwah and Oakland; it runs from Ramapo Valley Road to the river.

April Fly of the Month

After a long snowy winter opening day has finally arrived. The first hatch of the year will usually be the early black stonefly. These tiny (size 18) stones can frequently be seen crawling out of the water onto a snow bank to hatch.



The first mayfly of the year will usually be the tiny (size 22 or 24) blue winged olives, and of course we cannot overlook the midges. But don't worry; the larger flies are only a few weeks away.



The Great Backyard Bird Count

In February, in a joint project, the Cornell Lab of Ornithology and the Audubon Society conducted the fourteenth annual "Great Backyard Bird Count". During this year's count 60,000 people took part, identifying 596 species and making 11.4 million bird observations.

Here are lists of the most frequently reported birds and the most numerous:

Most frequent

- Northern Cardinal
- Mourning Dove
- Dark-eyed Junco
- Downy Woodpecker
- American Goldfinch
- Blue Jay
- American Crow
- Black Capped Chickadee
- House Finch

Most Numerous

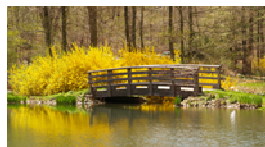
- European Starling
- American Robin
- Common Grackle
- Canada Goose
- Red-winged Blackbird
- Snow Goose
- American Crow
- American Goldfinch
- Dark-eyed Junco



If you enjoy watching birds and would like to go one step further, consider getting involved in the NestWatch project (<http://watch.birds.cornell.edu/nest/home/index>) from the Cornell Lab of Ornithology. Participants monitor nests and nest boxes to let scientists know when eggs are laid, when they hatch, and how many chicks fledge. It's an important way to measure the impact of climate change and other factors on breeding birds. Participation is free and it's a great way to connect with nature.

Streams

Peer at the water
Enjoy the movement
Trout splash playfully
Ah! Bliss



Trip Raffle

When we offered raffle tickets for a fishing trip on the upper Delaware guided by Ken Tutalo we did not know whether the members would like the idea of a raffle and how successful it would be but, now that that first raffle is over, it appears that the EJ TU members liked it.

Sales of this first raffle were strong enough to quickly cover the cost of the float-trip for two, so during the March 9, 2011 members meeting the winning ticket was pulled. The winner was John Rice from Harrington Park.

Because the members apparently like the idea of buying a low-cost chance on a valuable fishing trip we will now begin our next raffle. This trip will be a salt water fishing trip on Long Island Sound with Captain Steve Tiffinger.

As we said in the beginning, these raffles are not intended to be fund raisers. Tickets will only be offered at the regular monthly members meetings and as soon as we have sold enough tickets to reimburse the chapter for the cost of the day of fishing a winner will be chosen.



The Library Display

It's March and Doug has once again moved the EJ TU Library Display. Oops, that was last month. But it really doesn't matter because Doug Penna has not moved the display.

If you want to visit our display in April you will find that it's still in the **Clifton Library**.

Stop by and see the nice display that results from all of Doug's hard work

EJTU's March 2011 Annual Dinner at the Grand Chalet



In the lower left photo Don Ecker, EJTU's founding President, is on the far left in a dark suit.