



Riffler

The Monthly Newsletter of the
East Jersey Chapter of Trout Unlimited

Volume 41

June 2011

Number 6

No Beach Access?

The N.J. Department of Environmental Protection proposes to scrap important rules that protect public access to the State's tidal waterways, including the Jersey Shore, the Hudson River and other urban waters. The new rule proposal—the (No) Public Access Rule—threatens to drastically reduce the public's right to view, use and enjoy the State's rivers, bays and coast for fishing, surfing, bathing, diving and all other water dependent recreational activities



DEP Will Allow Towns to Control the Amount of Public Access. Towns that have eliminated on-street parking near the water, closed public access points, sided with property owners in access disputes, and resisted public access to beaches created with taxpayer dollars would be in control of public access decisions

New Public Access No Longer Required in Many Instances. The proposed rule will result in fewer new public access points, parking places and amenities, and keep many waterfronts closed to the public.

Strong Legal Requirements Removed. The proposed rule will remove many existing legal requirements established over the

Continued on page 2)

When: June 8 at 7:30 PM
Where: American Legion Hall
33 West Passaic Street
Rochelle Park, NJ

June Speaker Bob Romano

Bob will give an hour long presentation, concentrating on where to fish in the Rangeley lakes Region of western Maine with an emphasis on the rich fly-fishing tradition for which this region is known.

In 1900 there were 200 fishing guides in this area. One of the locally famous people was Carrie Stevens, who lived at Upper Dam. She originated and tied many fly patterns the most famous being the Gray Ghost Streamer which she originated in 1924. When Mrs. Stevens went to the Upper Dam pool to test it, she quickly hooked a 6 pound 13 ounce brook trout that she entered in a Field & Stream competition, taking second prize

Our speaker is an author with three books to his credit. Maybe he will tell us how to pronounce Mooselookme-guntic, the name of one of the lakes in the area.

July Meeting

In July we will once again hold a tackle swap meet with hamburgers, hot dogs and soda. Our impeccable, professional staff of cooks is limbering up their flipping muscles, so come prepared to eat. And, bring tackle and ancillary equipment that you would like to swap or sell.

EJTU Calendar

Advise Rich Malizia (973-304-0789 or remgcp@optonline.net) of changes to calendar events; let Ed Higgins (easyedh@gmail.com) know if you are interested in fishing trips well in advance because openings are limited and reservations must be made in advance. Get your money in as soon as possible or someone else will take your place.

Please consult EJTU's web site's "Upcoming Events" for the most up-to-date information and details.



Jun 3, 4, 5 - Picnic/
Fishing Trip - Catskill
Fly Fishing Museum

Jun 11 - Ramapo River Day
Aug/Sept. Date TBA - Planting along
Cresskill Brook
Aug/Sept Date TBA – Rebuilding
weir on the Ramapo

Welcome to



June's New Members

- | | |
|--------------------|-----------------------|
| Alan Adel | Wayne |
| Elmer Andal | Jersey City |
| Roger Bigger | West New York |
| Eric Cawood | Park Ridge |
| Jack Cremens | Park Ridge |
| Lourence Du Preez | Upper Saddle
River |
| Nicholas Serronico | Bayonne |

**East Jersey Chapter
Trout Unlimited
Board of Directors**

President/ Conservation Chair
Ray Cappock

1st Vice President/Webmaster
Bill Borowski

2nd Vice President/Treasurer
Bruce Seiden

Recording Secretary
Dino Eftychiou

Membership Secretary
Ken Barile

Education
Doug Penna

Speakers
Ed Higgins

Merchandise
Basil Santamaria

Trout in the Classroom
George Petersen

Points
Paul Reithmeier

Publicity Chair
John Grisoni

At Large
Elio Chiavola

Founding President
Don Ecker

Monthly General Member Meeting: The East Jersey Chapter of Trout Unlimited meets on the second Wednesday of each month at 7:30PM.
Location: The American Legion Hall, 33 West Passaic St, Rochelle Park, NJ. 07662.
Monthly Board Meeting: Board Members of East Jersey Trout Unlimited meet on the last Thursday of each month at 7:30PM.

How to contact us: Website <http://www.eastjerseytu.org> Mailing Address: East Jersey Chapter, Trout Unlimited Box 366 HoHoKus, NJ 07423-0366
For Membership Information call Ken Barile at 201-391-9214 or email to: kenbrile@optonline.net.
For Information on trips and other Chapter Activities go to www.eastjerseytu.org
For East Jersey and National Trout Unlimited information, visit our website at <http://www.tu.org>. Go to chapter number 091 and you will get the latest information about our chapter.
Riffles is your publication so we invite and encourage every member to contribute articles, tips, and stories. The articles may relate to trout, trout fishing, fishing in general or conservation but all articles are published at the discretion of the editors and should meet EJTU standards regarding protecting our environment and the merits of 'catch and release' techniques. Pseudonyms may be used but the editors must be informed of the name of the member who writes the article. Email to raycapp@optonline.net

Volunteer Points

As you probably know, when you perform volunteer activities for EJTU, someone keeps an attendance sheet and passes the information on to Paul Reithmeier, our board member who records the points that members accumulate through chapter activities. Then, when various point totals are reached, the volunteer/member is given a gift as a thank you. Some of the gifts are polo shirts, denim shirts, fleece jackets, beer steins and gift certificates.



At its last meeting the Board of Directors decided that those who assist at Healing Waters (Wounded veterans) and Casting For Recovery (Those recovering from breast cancer) activities will also be awarded points.

(Continued from page 1)

years that have a proven track record in creating and protecting access.

For fishermen:

Fishing Access and Amenities No Longer Specifically Required. *The current rule resulted in the creation of many new fishing access areas and amenities*

Along the Jersey Shore, the 1/4 Mile Access Standard is Being Reduced to 1/2 Mile. *As surf fishermen who lug gear from the nearest available parking space know, there is a major difference between fishing access being provided every 1/4 mile as opposed to every 1/2 mile.*

No Specific Parking Requirements Proposed. *Without sufficient parking, public access to the waterfront can be meaningless.*

Closed Areas to Remain Closed.

(Continued in next column)

Help!

Ramapo River Day

On Saturday, June 11 EJTU will once again hold its biggest, event – Ramapo River Day.

In conjunction with faculty members of Ramapo College of New Jersey, we will teach groups of young boys and girls about botany, water chemistry, non-point pollution, stream ecology and health, insect etymology, and the sport of fly fishing by demonstrating fly tying and giving instruction in fly casting.

At 8 AM on Saturday morning we will need a group of EJTU volunteers to help set up and prepare everything for the morning's events, then to help with insect retrieval from the river and fly casting instruction. Finally we will put everything away.

Volunteers will be finished by early afternoon, so you don't have to give up your weekend. However, we must know in advance how many volunteers will be available.

Come out and help on the morning of Saturday, June 11!

Please contact Rich Malizia at 973-304-0789 or remqcp@optonline.net.

(Continued from previous column)

Particularly along the urban waterfront, DEP's proposal "status quo" approach will keep those areas closed to the public.

!!!!!!!

Call Governor Christie (609-292-6000), contact your local legislators, or write a letter to the editor of your local newspaper urging that the proposed rule (DEP Docket #05-11-03) not be adopted

Don't Help!

We Trout Unlimited members are a helpful group of people. Listen to any of the clusters of conversationalists at our meetings and events and you will probably hear about activities at other clubs, clean-ups sponsored by other groups, fishing derbies at which our members have assisted and a variety of activities at which our members have volunteered their time.

So when should our members not dive in and help? When they find a young bird!

Young birds may leave their nests before they can fly so you may find one under a tree or bush where a nest is located. If the bird had fledged and appears alert and healthy, leave it alone. The parents will be better able

to care for the bird than you can. One exception is when the young bird is obviously in danger, e.g., from traffic or predators. In that case move the bird to a low bush and then leave so you don't scare the parents away. Most birds have little sense of smell so don't worry about leaving a human scent that will cause the parents to avoid the young one.

However, you find a featherless bird, first try to find its nest – look up and not far away - and put it back. If you can't return the bird to its nest, put it into a small, padded box, keep it warm and contact a rehabilitator. First, it is illegal to keep wild birds and animals, and second, rehabilitators have the equipment, medication and knowledge needed to care for injured wildlife.

Two nearby rehabilitators are:

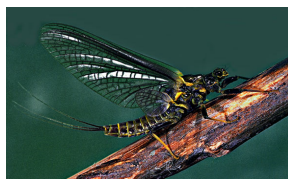
The Avian Wildlife Center;
146 Neilson Road, Wantage, NJ
[Call first] (Tel. 973.702.1851)

The Raptor Trust;
1390 White Bridge Road, Millington, NJ
[Open 24/7] (Tel. 908.647.2353)



June Flies of the Month

Things are getting hot, and I don't mean the weather. The hatches we dreamed of all winter are in full swing.



Green Drakes



The Mayflies both large and small have our attention. March Browns, Green Drakes, Sulfurs, & Olives have all been getting the trout's attention as well.



March Browns

Birding Hike

On Thursday, June 9 NJ Audubon will present a birding hike in Essex County Becker Park. Hikers will enjoy beautiful vistas of the Passaic River Valley at the right time to discover breeding birds and maybe orioles.

Meet at the Essex County Envi-

ronmental Center at 8:30 AM.

The hike is free but space is limited so contact Kelly Wenzel (973.226.6082) for information and to register.

The Essex County Environmental Center is located at 621B Eagle Rock Avenue, Roseland, NJ

Warm Weather Fishing

With hot weather here many fishermen will leave the trout streams and begin warm water fishing. Carp fishing is becoming more popular so you might give that a try; Curlis Lake in Mercer County looks like a good spot!

The NJDEP Division of Fish and Wildlife has confirmed that a Grass Carp caught by James Dempsey, Jr. of Ewing New Jersey on May 12, 2011 is officially a new state record. The huge fish was taken from Curlis Lake in Mercer County and weighed an astounding 55 lbs. 8 oz., surpassing the previous record set in 2008 by Homer Tye by one pound, one ounce. That record fish was also from Curlis Lake.

